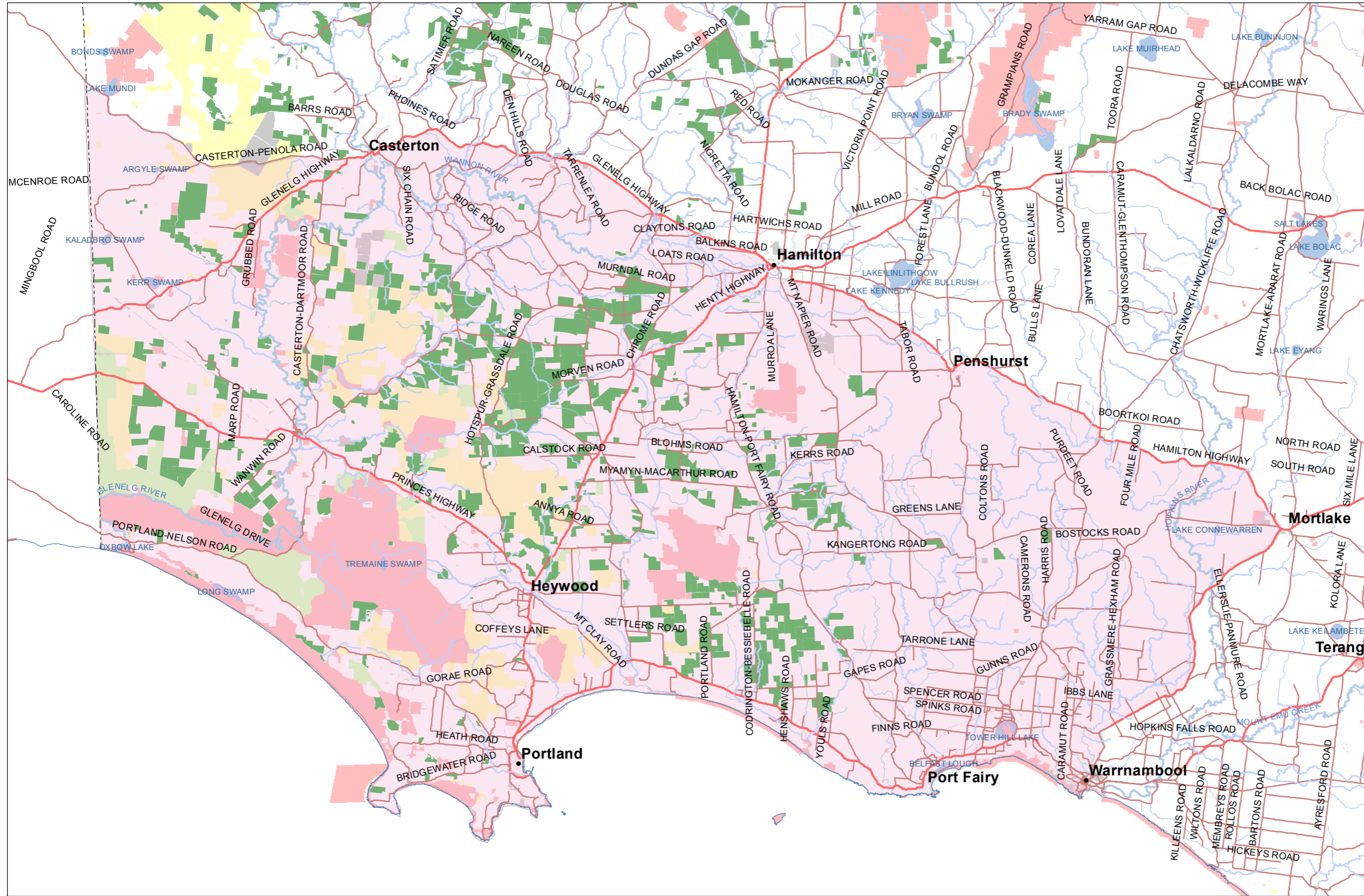


Koala Management Standards for Blue-gum Plantation Operations Koala Zone Map



Legend

Towns

- City
- Regional Centre
- Major Town
- Large Town
- Hydrology

Roads

- Freeway
- Highway
- Main Road
- Major Watercourse
- Minor Watercourse

Plantation type

- Hardwood
- GTRPC Koala Areas
- Coastline
- State Border
- Waterbody

Public Land Tenure

- State Forest
- Parks and Other Reserves
- Other Public Land
- Commonwealth Land
- Plantation

Disclaimer
 This publication may be of assistance to you but the State of Victoria and its employees do not guarantee that the publication is without flaw of any kind or is wholly appropriate for your particular purpose and therefore disclaims all liability for any error, loss or other consequence which may arise from you relying on any information in this publication.

Accessibility
 If you would like to receive this publication in an accessible format such as large print or black and white please telephone 136 186, or email customer.service@delwp.vic.gov.au. Deaf, hearing impaired or speech impaired? Call us via the National Relay Service on 133 677 or visit www.relayservice.com.au

Additional information
 Spatial data is sourced from the Victorian Spatial Data Library (VSDL).
 Map produced by Biodiversity 11th April 2016
 Copyright © The State of Victoria,
 Department of Environment, Land, Water and Planning, 2016

PROJECTION: Universal Transverse Mercator (UTM) Projection
DATUM: Horizontal: Geocentric Datum of Australia (GDA)
 Vertical: Australian Height Datum (AHD)
GRID: Grid Interval 1000 metres
 Map Grid of Australia 1994 (MGA94) Zone 54

