

# Victoria's Bushfire Emergency: Biodiversity Response and Recovery

Updated 28/02/20

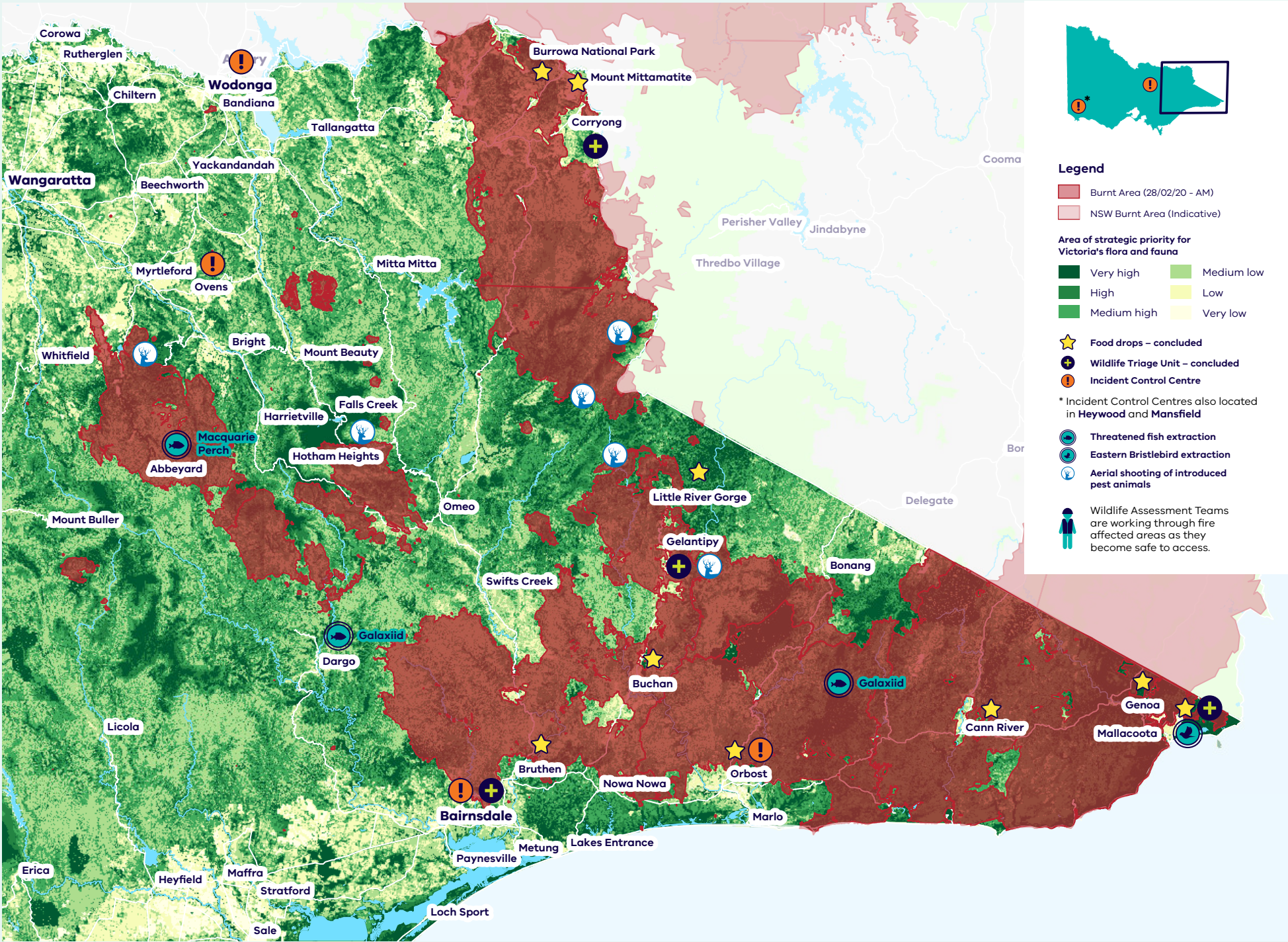
Wildlife and the habitats in which they live have been heavily impacted by the Victorian fires. This includes large areas of threatened species habitat.

Over **170** of Victoria's rare or threatened species have had **at least 50%** of their habitat burnt.



Victoria's Bushfire Emergency: Biodiversity Response and Recovery identifies **118** species of **particular concern**. These are comprised of:

- 13 frogs**
- 9 birds**
- 19 mammals**
- 10 reptiles**
- 38 plants**
- 29 aquatic species**
- Invertebrate numbers currently unknown**



## What we are doing to help fire-affected wildlife:



Wildlife Triage Units



Wildlife Assessment Teams on the ground



Targeted food drops to support surviving wildlife



Extraction of high-priority species

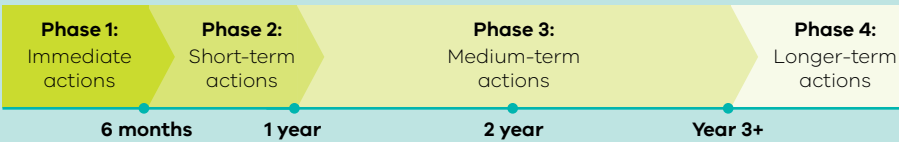
## Actions for threatened species and their habitats:

The Victorian Government is taking immediate action to support Victoria's bushfire impacted wildlife and biodiversity with a \$17.5 million rescue funding package to assist in response and recovery efforts for Phase 1.

Many actions are already underway as we continue to assess fire-affected areas and respond directly to impacted plants and animals wherever possible. The Bushfire Biodiversity Response and Recovery program delivers across six key themes. Further information about the delivery of actions under these themes will be communicated as work progresses.

Theme	Victorian Government Funding
1. Immediate reconnaissance of critical fauna, flora and habitat for targeted actions	\$1,850,000
2. Wildlife welfare	\$1,000,000
3. Emergency extraction to prevent extinction and limit species decline	\$2,400,000
4. Intensified and sustained management of threats	\$7,000,000
5. Maximise long term resilience	\$3,000,000
6. Knowledge and program management	\$2,250,000
<b>Total</b>	<b>\$17,500,000</b>

## Phased response and recovery timeline



## Species and vegetation communities of concern include:



Mallacoota Burrowing Cray



Large Brown Tree Frog



Eastern Bristlebird



Diamond Python



Galaxiids



Long-footed Potoroo



Warm Temperate Rainforest



Alpine Ash



Betka Bottlebrush

For current fire warnings and emergency information please visit: [www.emergency.vic.gov.au](http://www.emergency.vic.gov.au)

**How to help!** Donate to the **Zoos Victoria Bushfire Emergency Wildlife Fund** [www.zoo.org.au/fire-fund](http://www.zoo.org.au/fire-fund)

Photo credits: Mallacoota Burrowing Cray: D Crowther, Large Brown Tree Frog: L Durkin, Diamond Python: I McCann, Galaxiid: T Raadik, Warm Temperate Rainforest: M White, Alpine Ash: T Fairman. All others: DELWP

To see the full report, updates and more information on the Victorian Government's bushfire response to support the recovery of wildlife and threatened species please visit: [www.wildlife.vic.gov.au](http://www.wildlife.vic.gov.au)