

Who do I contact?

If you find a sick, injured or orphaned animal, call a wildlife rescuer, carer or shelter. Call 136 186 or scan the QR code.



SCAN ME

- All wildlife can carry disease
- Handling wildlife can cause stress or injury to the animal and people - contact a trained wildlife rescuer.
- If safe, you can transport the animal to the nearest vet.
- Marine animals require specialist assistance (see contacts). Take only photos and do not approach, keep a safe distance for you and the animal.

Can I look after sick, injured or orphaned wildlife?

Wildlife can only be cared for legally by DEECA authorised Wildlife Shelters and Foster Carers.

Wildlife requires specialist care and treatment.

It is illegal in Victoria to keep sick, injured or orphaned wildlife as a pet.

© The State of Victoria Department of Energy, Environment and Climate Action 2023



This work is licenced under a Creative Commons Attribution 4.0 Australia licence. You are free to re-use the work under that licence, on the condition that you credit the State of Victoria as author. The licence does not apply to any images, photographs or branding, including the Victorian Coat of Arms, the Victorian Government logo and the Department of Energy, Environment and Climate Action logo. To view a copy of this licence, visit <http://creativecommons.org/licenses/by/4.0/>

ISBN 978-1-76136-242-2 (Print)

ISBN 978-1-76136-243-9 (pdf/online/MS word)

Accessibility

If you would like to receive this publication in an alternative format, please telephone DEECA Customer Service Centre 136186, email customer.service@deeca.vic.gov.au, via the National Relay Service on 133 677 www.relayservice.com.au. This document is also available on the internet at www.wildlife.vic.gov.au.

Disclaimer

This publication may be of assistance to you but the State of Victoria and its employees do not guarantee that the publication is without flaw of any kind or is wholly appropriate for your particular purposes and therefore disclaims all liability for any error, loss or other consequence which may arise from you relying on any information in this publication.

Wildlife artwork by Nadia Rose (Gunditjmara) of Namaro Creative

Need more help or not what you were looking for? call 136 186



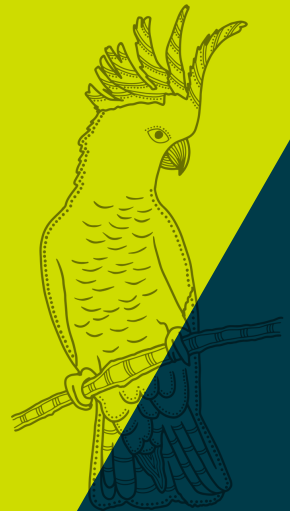
Energy,
Environment
and Climate Action

Energy,
Environment
and Climate Action



Living with Wildlife

Sick or injured wildlife



How can I help?

- Observe injured wildlife from a distance.
- If safe to do so, transport to a vet.
- For larger wildlife, do not approach or attempt to catch it. Chasing or catching injured wildlife may result in a worse injury and unnecessary stress for the animal.
- Call for assistance on 136 186 or via the [Help for Wildlife Tool](#).
- Keep pets away.
- Do not give wildlife food or water.
- Do not touch the animal. It can carry diseases and should only be handled by a trained and vaccinated rescuer.



Did you know?

In Victoria, native wildlife is protected under the Wildlife Act 1975. Under the Act, it is an offence to kill, take, control or harm wildlife in Victoria without appropriate authorisation.

You can't take wildlife home.

Other contacts

[Zoos Victoria, Marine Response Unit](#) for Seals, turtles and marine birds - 1300 245 678

[Whale and Dolphin Emergency](#) Hotline - 1300 136 017.

If you suspect a wildlife crime, make a report to Crime Stoppers Victoria on 1800 333 000

Mange Management:
mangemanagement.org.au

